

TULEVAISUUS VANKALLA POHJALLA



KARHULAN TEOLLISUUSPUISTO

www.karhulanteollisuuspuisto.fi

LABORATORY AND PRODUCTION BUILDING, F 253 (HA laboratory)

OFFICES



KARHULAN
TEOLLISUUSPUISTO

LABORATORY AND PRODUCTION BUILDING, F 253 (HA laboratory)

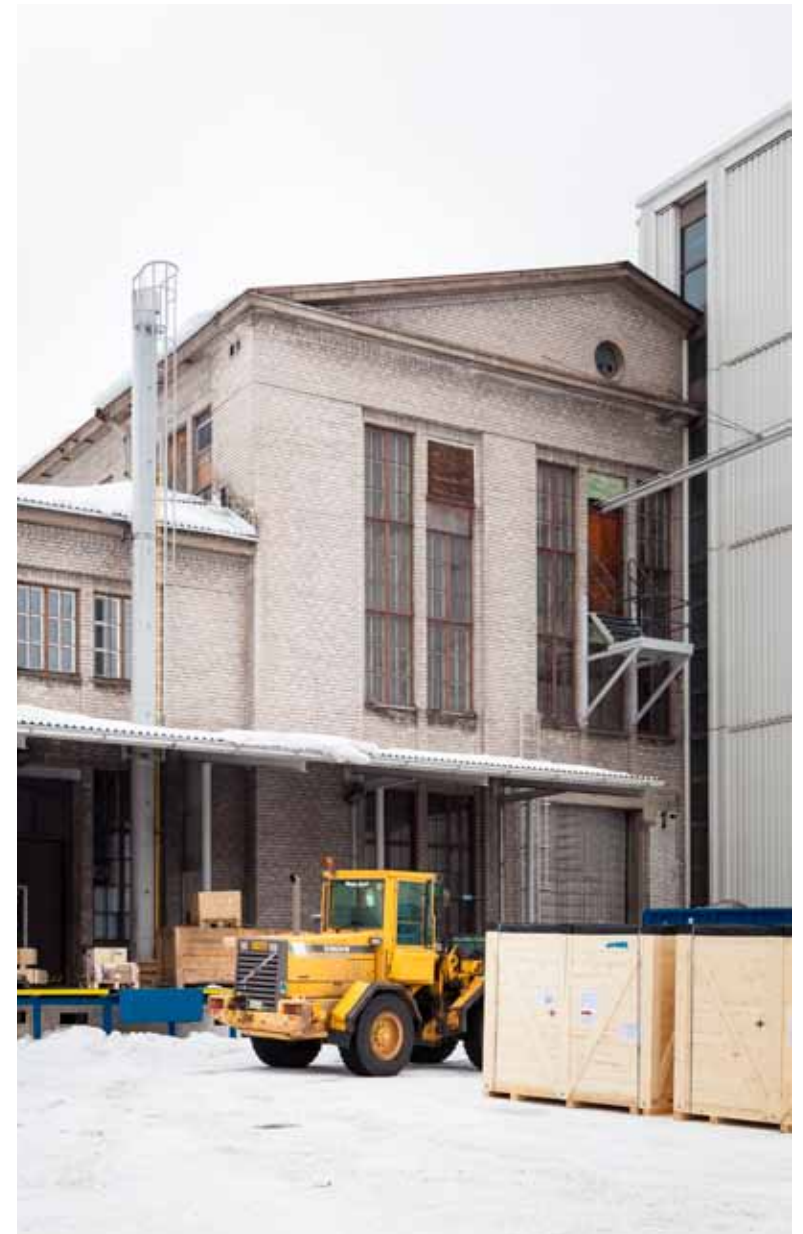


OFFICES



KARHULAN
TEOLLISUUSPUISTO

LABORATORY AND PRODUCTION BUILDING, F 253 (HA laboratory)



OFFICES

LABORATORY AND PRODUCTION BUILDING, F 253 (HA laboratory)

KERROSALA 5,674 m², areas A–J

A 3,945 m ²	B 278 m ²	C 312 m ²	D 80 m ²	E 50 m ²
F 165 m ²	G 24 m ²	H 124 m ²	J 696 m ²	

PINTA-ALA 6,783 m², areas A–J

A 5 129 m ²	B 268 m ²	C 312 m ²	D 80 m ²	E 50 m ²
F 100 m ²	G 24 m ²	H 124 m ²	J 696 m ²	

KELLARIN PINTA-ALA 1959 m²

Area for utilisation approx. 626m²

TILAVUUS 44,881 m³, areas A–J

A 26,720 m ³	B 7,250 m ³	C 2,210 m ³	D 664 m ³	E 1,600 m ³
F 930 m ³	G 132 m ³	H 295 m ³	J 5,080 m ³	

NUMBER OF FLOORS 1–3, YEARS OF CONSTRUCTION 1926–1935

ANNUAL ENLARGEMENTS

B 1985	C 1958	D 1957	E 1993	F 1988
G 1985	H 1986	J 1989		

ROOFS OF CORRUGATED IRON

WALL STRUCTURES

Walls partly brick (area A and G), partly timber cladding (part C), other parts tarmac and corrugated iron area A plans architect Karl Lindahl.

AREA A

Area A, 3,945m², is mainly a semi-warm production space on three floors. The laboratory, office and social facilities are warm facilities.

The ceilings of the production facilities are mainly painted concrete; in the laboratory, office and social facilities they are mainly lowered board ceilings. The unobstructed height of the production facilities up to the supporting beams on the first floor is 4,585mm. On the second floor the unobstructed height to the lower surface of the beams in the middle area is 2,900mm; it is 8,400–9,900mm at the edges. The unobstructed height of the third floor underneath the beam is 2,900mm. The walls are mainly of painted brick or board structure. The floors in the production facilities are generally of coated concrete, carrying capacity 1,000–2,000kg/m² per area. The floors of the laboratory, office and social facilities are mainly surfaced with plastic, carpet or plastic tiles, carrying capacity 250–500kg/m².

The unobstructed height of the loading shelter is 4,085mm. Two lifting doors lead from the shelter to the production facilities; openings 3,300x4,500mm and 2,500x3,000mm.

The production facilities have one goods lift with a maximum load of 1,000kg and various bridge and tower cranes, loads 1,000–3,000kg.



AREA B and AREA E

Area B 268m² is semi-warm. Area E is a cold production facility. The roof is of corrugated iron. The unobstructed height of area B is 20,600mm to the lower surface of the brim, in area E the unobstructed height to the lower surface of the beams is 5,580–6,600mm. The walls are mainly of coated corrugated iron, the wall of area A is of unpainted brick.

The floors in the production facilities are mainly of uncoated concrete. The carrying capacity of the floor in area B is 2,000kg/m². Two lifting doors lead to area B, openings 4,400x5,400mm and six lifting doors to area E, the widths 3,400–4,400, height 5,400mm.

Area B has two cranes with a maximum load of 2,000kg.

AREA C

Cold storage facilities 306m². The walls of the facilities are of concrete. The roof is of corrugated iron. The unobstructed height of the facilities is 4,500–5,900mm. The floor is of untreated concrete and its carrying capacity is over 1,000kg/m². A sliding door leads to the facilities, opening 4,500x4,000mm.

AREA D

Cold loading shelter, space 164m². The ceiling and walls are of corrugated iron. The unobstructed height of the facilities is 4,200–5,230mm. The floor is made of concrete coated with plywood. One of the walls of the facilities is a sliding door wall and there is a sliding door at the end of the facilities, opening 2,500x2,200mm. The loading shelter has a crane, carrying capacity 750kg.

AREA H

One-floor social facilities' building connected to area A with a gateway, 164m². The ceilings and the walls are painted building board. The unobstructed height of the facilities is 2,400mm. The floors are covered with a vinyl flooring, carrying capacity 150kg/m².

AREA F AND AREA G

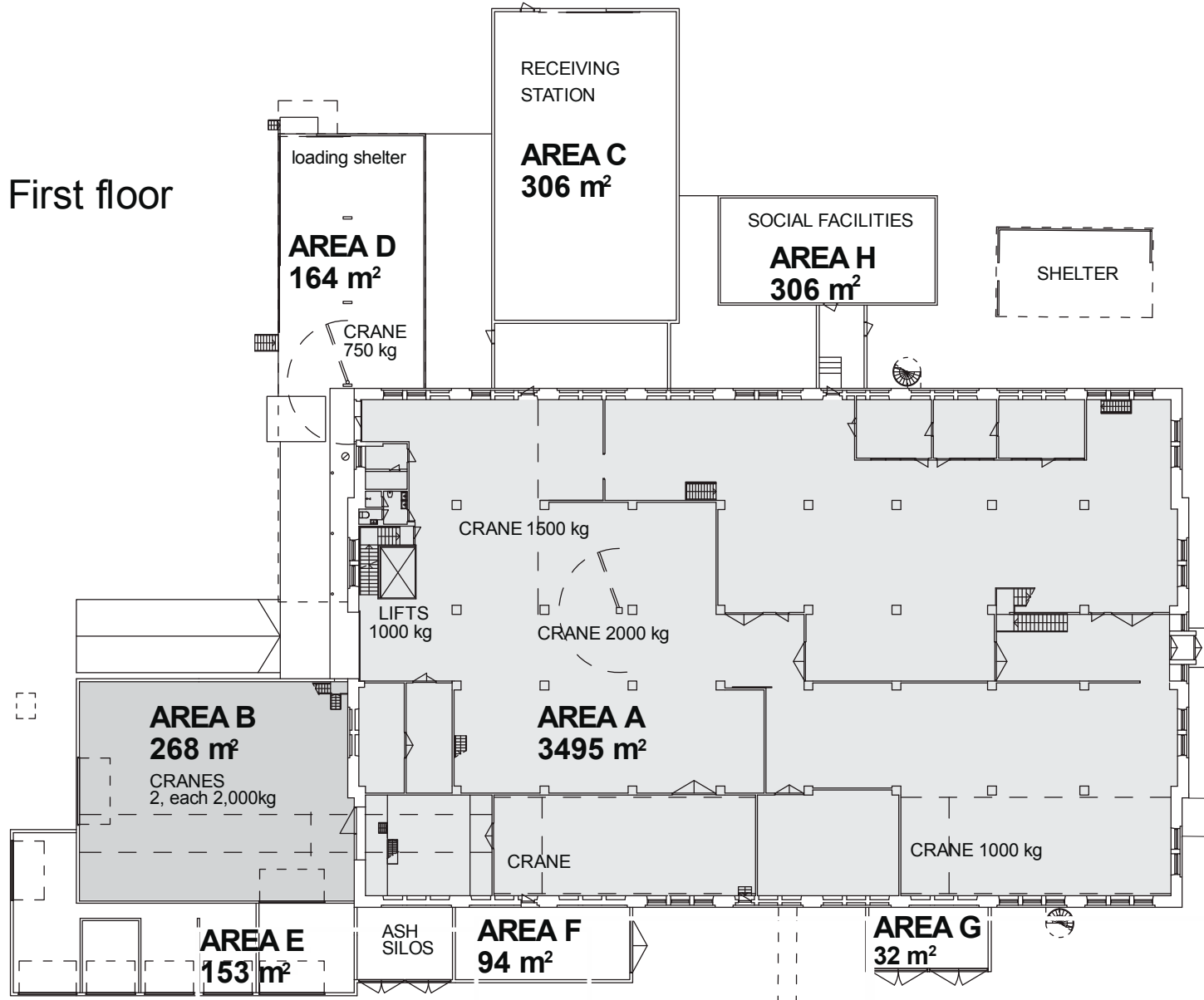
Areas F (compressor space) and area G (substation) are technical facilities. The carrying capacity of area F is 2,000kg/m².

SEPARATE STORAGE FACILITY

The facility is a steel framed, corrugated iron coated cold storage facility with an area of 696m². The storage floor is covered with tarmac and the unobstructed height is 6,000–7,150mm. The other longer side of the storage is covered with protective curtains, partly with sliding doors. The height of the upper edge of the opening is 5,000mm.

Changes to details are possible.

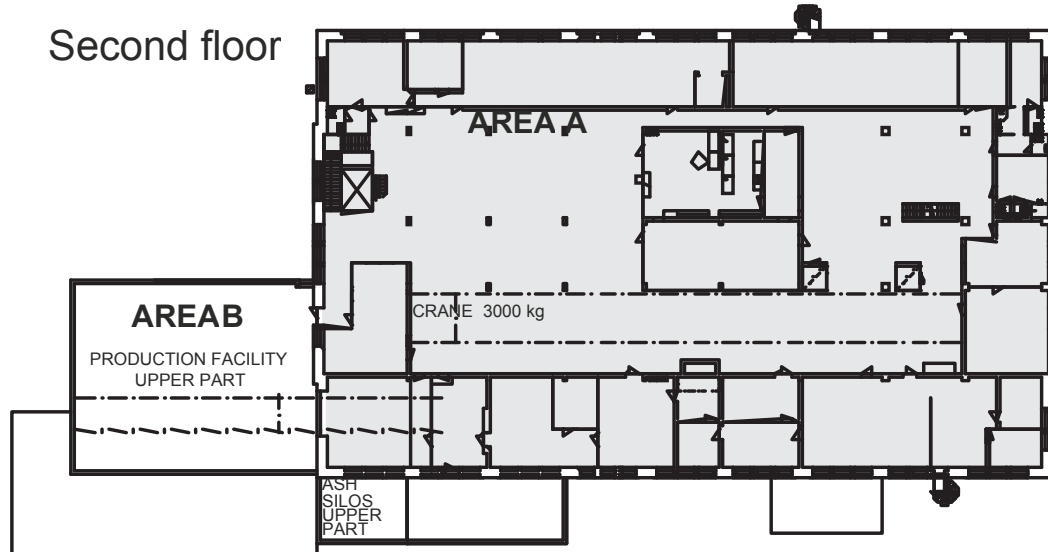
First floor



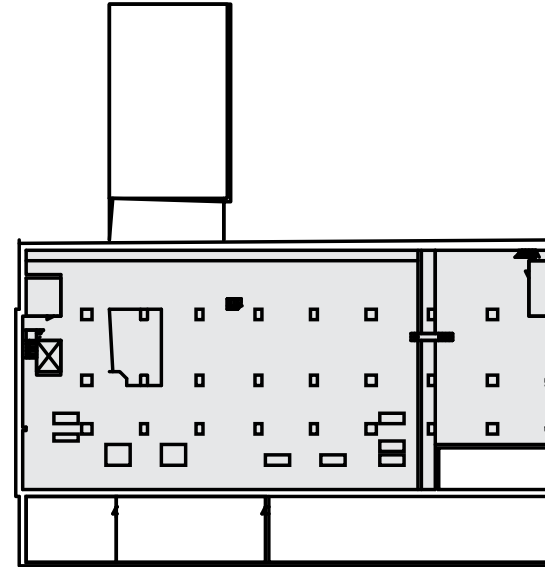
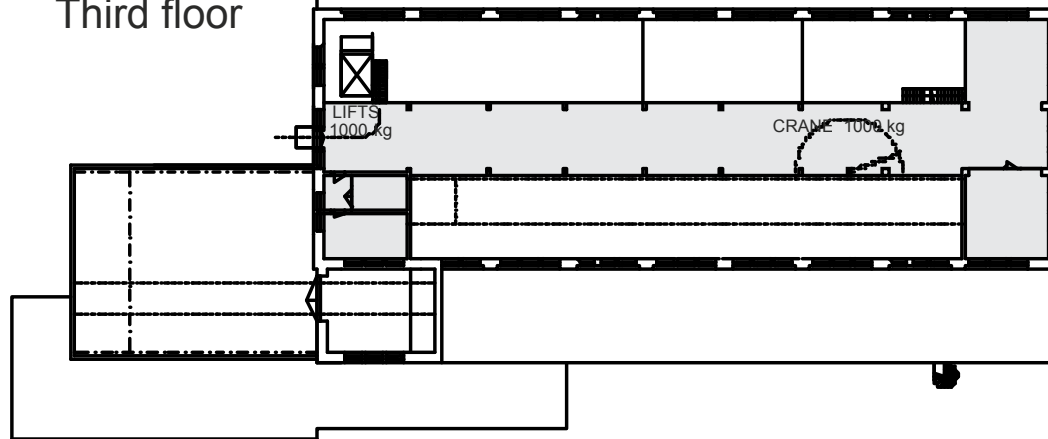
KARHULAN
TEOLLISUUSPUISTO

LABORATORY AND PRODUCTION BUILDING, F 253 (HA laboratory)

Second floor



Third floor



Cellars

OFFICES



KARHULAN
TEOLLISUUSPUISTO

LABORATORY AND PRODUCTION BUILDING, F 253 (HA laboratory)

LABORATORY AND
PRODUCTION BUILDING,
F 253 (HA laboratory)

Pajatie 96

Enquiries:

Mikko Koskiahde

tel. +358 50 518 3600

mikko.koskiahde@a-ahlstrom.fi



OFFICES



Helsinki

Kotka

Pietari

KARHULAN TEOLLISUUSPUISTO

Karhulan Teollisuuspuisto

PL 38, 48601 Kotka

Finland

puh. 010 234 2000

www.karhulanteollisuuspuisto.fi



Vipuvoimaa
EU:lta
2007-2013